

PARTS LIST			
No.	QTY.	DESCRIPTION	
1	1	GOAL 00077 007	GOAL ASSEMBLY
2	1	COVR 00067 007	GOAL COVER
3	1	09608-000	ANTI-WHIP NET
4	4	HDWE 02040 0P0	3/8" x 3 1/2" Lg. CARRIAGE BOLT (Grade 5)
5	4	HDWE 05004 0E0	3/8" FLATWASHER
6	4	HDWE 04002 0E0	3/8" LOCKWASHER
7	4	HDWE 03002 0E0	3/8" HEX NUT
8	4	PCAP 00040 002	THREAD PROTECTOR
9	1	ROND 00123 100	NET ATTACHMENT CABLE
10	1	HDWE 06049 0E0	1/4" x 1/2" LG. MACHINE SCREW

REVISION	DATE	PORTER No.
1	1-1-2004	
2		
3		
4		
5		
6		
7		
8		
9		
10		

© COPYRIGHT 2003 PORTER ATHLETIC EQUIPMENT CO. ALL RIGHTS RESERVED.

DATE: 2-1-2003

CUSTOMER No.:

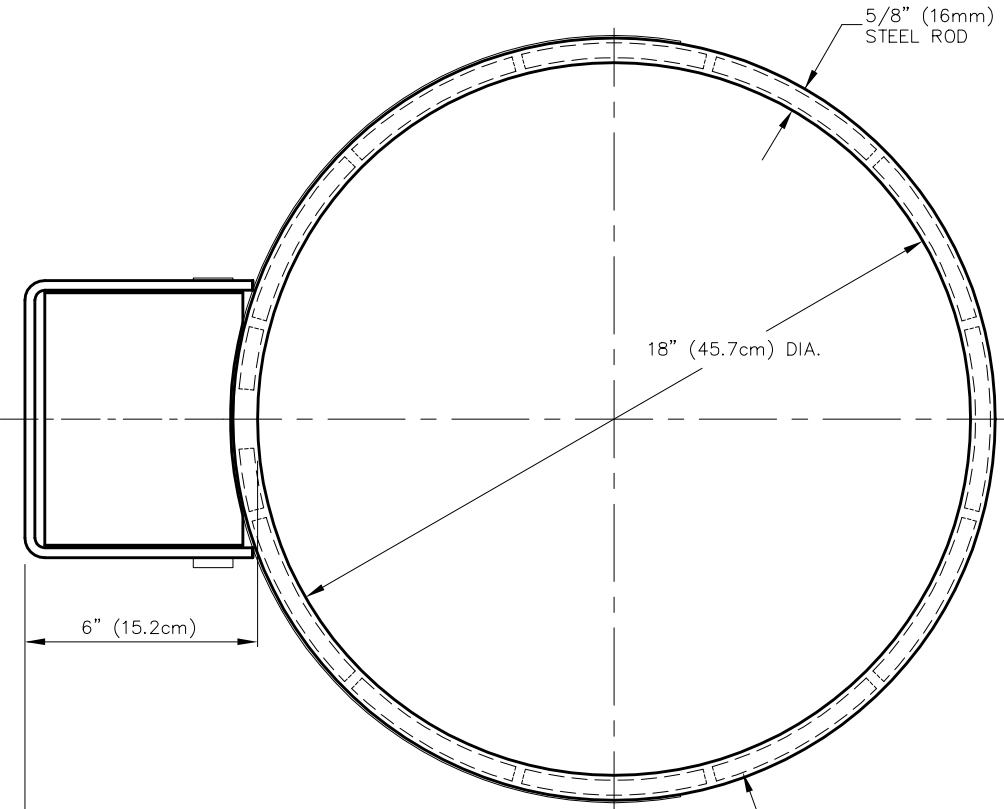
00256-500

TORQ-FLEX® ADJUSTABLE GOAL  
With MOUNTING HARDWARE & ANTI-WHIP NET

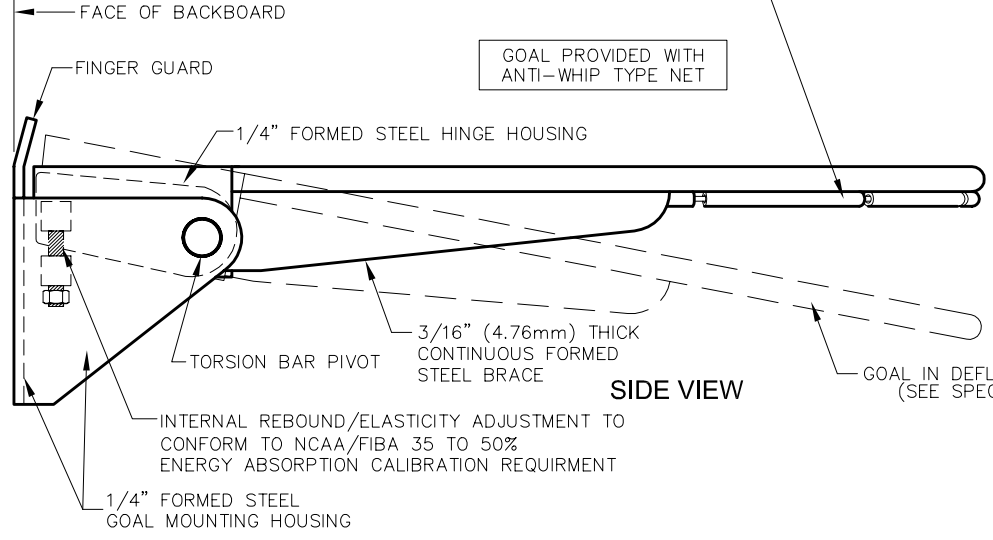
THIS PRINT IS THE PROPERTY OF PORTER ATHLETIC EQUIPMENT COMPANY AND MAY NOT BE REPRODUCED WITHOUT WRITTEN PERMISSION

**Porter**  
WORLD LEADER  
IN QUALITY SPORTS EQUIPMENT  
2500 S. 25th AVENUE  
BROADVIEW, ILLINOIS 60155  
www.porter-ath.com

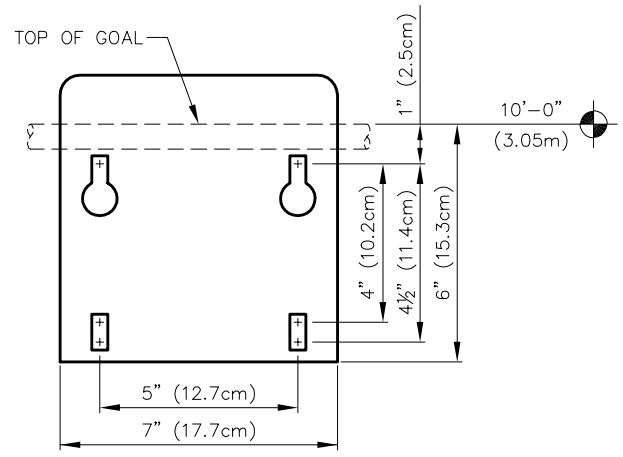
DRAWING BY: CMG  
CHECKED BY: RJM  
PAGE No.: B-256-5



PLAN VIEW

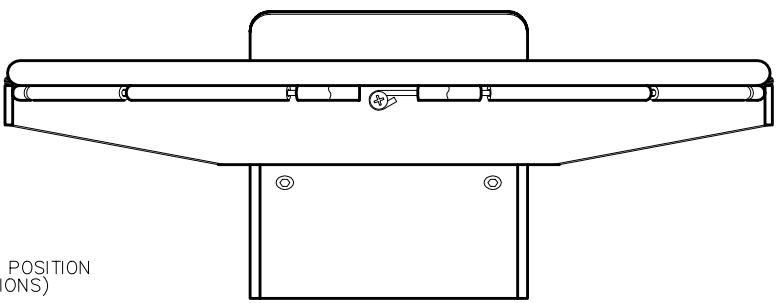


SIDE VIEW



GOAL MOUNTING PLATE DETAIL  
(VIEW FROM BACKSIDE)

KEYHOLE SLOTS ALLOW EASE OF ATTACHING GOAL WITH CARRIAGE BOLT HARDWARE PROVIDED.



FRONT VIEW  
(WITH COVER IN PLACE)

00256-500 TORQ-FLEX® ADJUSTABLE GOAL FOR 3'-6" x 6'-0" RECTANGULAR BACKBOARDS

PATENT No. 6,503,160. OTHER PATENTS PENDING.

# **SPECIFICATIONS**

## **PORTER No. 00256-500 TORQ-FLEX® ADJUSTABLE GOAL** **(Movable Rim)** **(PATENT No. 6,503,160 – OTHER PATENTS PENDING)**

Goal shall be designed to protect players and equipment by absorbing shock loads due to slam dunking or hanging on the rim, at all levels of competition. Goal shall be designed with a unique, easily adjustable mechanism, to properly calibrate the rebound/elasticity, in order to meet the NCAA (BR-22, Paragraph 9) and FIBA prescribed 35-to-50 percent energy absorption range. Goal shall be factory-adjusted to an approximate 40 percent setting. For competition games or tournaments, the goal should be adjusted after being mounted on a support system and calibrated with Porter's Fair-Court® Rim Testing System (ERTD2003NCAA).

Goal shall incorporate a precision, case-hardened, high-tensile steel alloy torsion rod pivot design to allow tip of rim to flex approximately 2-1/2" (6.4cm) with a 230 pound (104kg) static load. Goal shall instantaneously return to the playing position when load is released. Torsion rod/pivot shall be designed to decelerate downward motion of goal on impact, to provide maximum player safety and minimize undue stresses on the backboard and support system. Goals incorporating compression springs or shock absorber type mechanisms shall not be considered as equal.

Rim shall be fabricated from 5/8" (1.6cm) diameter cold drawn alloy steel, round formed to an 18" (45.7cm) inside diameter ring. Inside diameter of ring shall be positioned 6" (15cm) from face of backboard by a heavy, 1/4" (6.4mm) thick, formed steel hinged type housing. Heavy, 1/4" (6.4mm) thick, formed steel goal mounting housing shall be fabricated with a keyhole type slot arrangement to facilitate mounting to backboard or direct-mount type support systems. Removable cover is provided to completely conceal mounting bolt hardware and adjustment mechanism.

Rim shall be rigidly braced by means of a 3/16" (4.7mm) thick formed and die cut steel brace welded in position on the underside of the rim for maximum support. Rim shall be provided with a unique "tube-tie" net attachment system to eliminate the conventional wire-formed type net locks for additional player safety.

Goal shall be finished in a durable, official orange powder-coat finish. Durable, anti-whip type net and attachment hardware included.

Goal to be provided with standard mounting centers for attachment to any 3'-6" x 6'-0" (1.07m x 1.83m) rectangular backboard.

Goal is furnished with a limited 5-year warranty.